



Diesel Pile Hammers

Metric Units - US Units



Diesel Pile Hammers

Technical Data

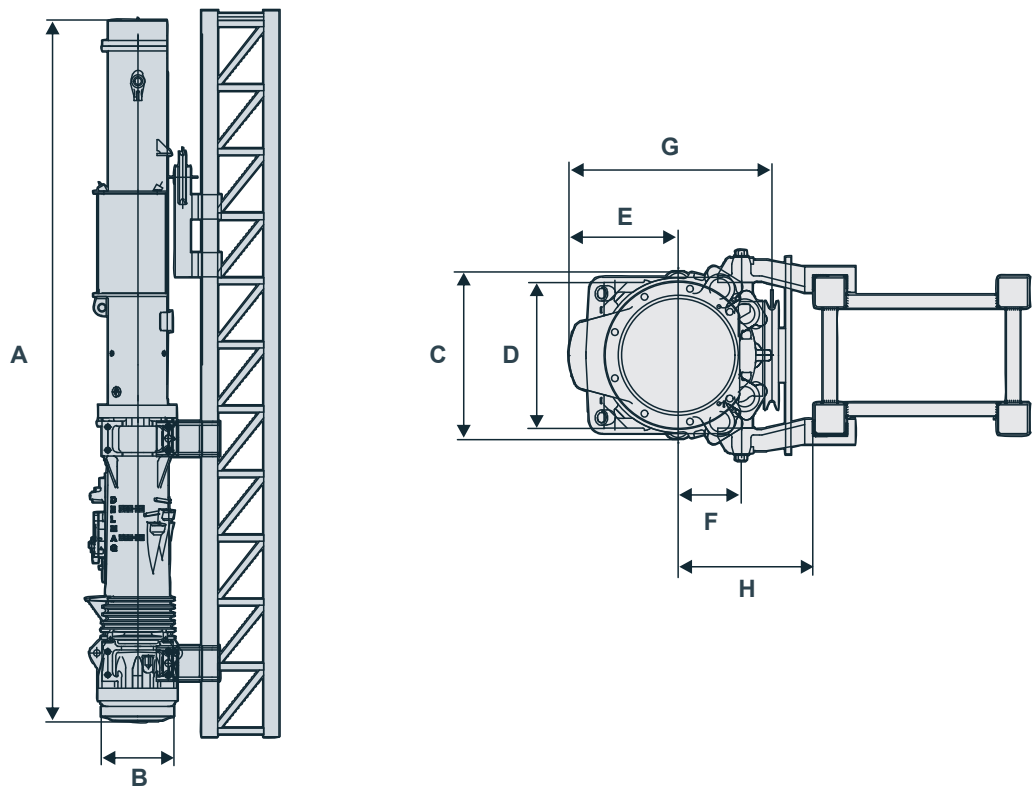
| | | D6-32 | D8-22 | D12-42 | D16-32 |
|---|--------|--------------|--------------|---------------|---------------|
| Impact weight (piston) | kg | 600 | 800 | 1280 | 1600 |
| | lbs | 1,320 | 1,765 | 2,820 | 3,530 |
| Energy per blow max. - min. | kNm | 19-9 | 27-13 | 46-20 | 54-25 |
| | ft-lbs | 14,015-6,640 | 19,915-9,590 | 33,930-14,750 | 39,830-18,440 |
| Number of blows | min-1 | 38-52 | 36-52 | 35-52 | 36-52 |
| Suitable for driving piles (depending on soil and pile) | kg | 300 - 2000 | 500-3000 | 800-5000 | 1000-6000 |
| | lbs | 660-4,400 | 1,100-6,600 | 1,760-11,000 | 2,200-13,200 |
| Consumption | | | | | |
| Diesel oil | l/h | 3,7 | 4 | 4,5 | 5 |
| | gal/h | 0.81 | 0.88 | 1 | 1.1 |
| Lubricant | l/h | 0,25 | 0,5 | 0,5 | 0,5 |
| | gal/h | 0.05 | 0.11 | 0.11 | 0.11 |
| Tank capacity | | | | | |
| Diesel oil tank | l | 19 | 20 | 25 | 32 |
| | gal | 5 | 5.3 | 6.6 | 8.45 |
| Lube tank | l | 5 | 6 | 6,5 | 9 |
| | gal | 1.3 | 1.58 | 1.7 | 2.4 |
| Max. rope diameter for deflector sheave of tripping device | mm | 20 | 20 | 20 | 20 |
| | in | 0.78 | 0.78 | 0.78 | 0.78 |
| Max. inclined pile driving without / with extension | | 1:3 / - | 1:2 / - | 1:5 / 1:1 | 1:5 / 1:1 |
| Weight | | | | | |
| Diesel pile hammer | kg | 1620 | 1935 | 2735 | 3620 |
| | lbs | 3,570 | 4,265 | 6,030 | 7,980 |
| Tripping device | kg | 114 | 114 | 114 | 114 |
| | lbs | 250 | 250 | 250 | 250 |

Technical Data

| | | D19-42 | D25-32 | D30-32 |
|---|--------|---------------|---------------|---------------|
| Impact weight (piston) | kg | 1820 | 2500 | 3000 |
| | lbs | 4,010 | 5,510 | 6,610 |
| Energy per blow max. - min. | kNm | 66-29 | 90-40 | 103-48 |
| | ft-lbs | 48,680-21,390 | 66,380-29,500 | 75,970-35,400 |
| Number of blows | min-1 | 35-52 | 35-52 | 36-52 |
| Suitable for driving piles (depending on soil and pile) | kg | 1100-6000 | 1600-7500 | 2000-9000 |
| | lbs | 2,420-13,200 | 3,530-16,535 | 4,410-19,840 |
| Consumption | | | | |
| Diesel oil | l/h | 7,5 | 7,5 | 10 |
| | gal/h | 1.65 | 1.65 | 2.2 |
| Lubricant | l/h | 0,5 | 0,6 | 1 |
| | gal/h | 0.11 | 0.13 | 0.22 |
| Tank capacity | | | | |
| Diesel oil tank | l | 32 | 67 | 67 |
| | gal | 8.45 | 17.7 | 17.7 |
| Lube tank | l | 9 | 19 | 19 |
| | gal | 2.4 | 5 | 5 |
| Max. rope diameter for deflector sheave of tripping device | mm | 20 | 22 | 22 |
| | in | 0.78 | 0.87 | 0.87 |
| Max. inclined pile driving without / with extension | | 1:5 / 1:1 | 1:5 / 1:1 | 1:5 / 1:1 |
| Weight | | | | |
| Diesel pile hammer | kg | 3840 | 5670 | 6170 |
| | lbs | 8,465 | 12,500 | 13,600 |
| Tripping device | kg | 114 | 186 | 186 |
| | lbs | 250 | 410 | 410 |

Dimensions

| | | D6-32 | D8-22 | D12-42 | D16-32 | D19-42 | D25-32 | D30-32 |
|---|----|-------|-------|--------|--------|--------|--------|--------|
| A | mm | 4300 | 4700 | 4770 | 5160 | 5160 | 5500 | 5500 |
| B | mm | 350 | 350 | 400 | 440 | 440 | 560 | 560 |
| C | mm | 465 | 410 | 440 | 480 | 480 | 670 | 670 |
| D | mm | 320 | 320 | 320 | 320 | 320 | 540 | 540 |
| E | mm | 310 | 315 | 335 | 345 | 345 | 405 | 405 |
| F | mm | 245 | 245 | 245 | 280 | 280 | 235 | 235 |
| G | mm | 590 | 590 | 610 | 700 | 700 | 780 | 780 |
| H | mm | 320 | 320 | 340 | 355 | 360 | 435 | 435 |



Dimensions

| | | D6-32 | D8-22 | D12-42 | D16-32 | D19-42 | D25-32 | D30-32 |
|---|----|-------|-------|--------|--------|--------|--------|--------|
| A | in | 170 | 185 | 188 | 203 | 203 | 216.5 | 216.5 |
| B | in | 13.8 | 13.8 | 15.8 | 17.3 | 17.3 | 22 | 22 |
| C | in | 18.3 | 16.15 | 17.3 | 18.9 | 18.9 | 26.4 | 26.4 |
| D | in | 12.6 | 12.6 | 12.6 | 12.6 | 12.6 | 21.3 | 21.3 |
| E | in | 12.2 | 12.4 | 13.2 | 13.6 | 13.6 | 16 | 16 |
| F | in | 9.7 | 9.7 | 9.7 | 11 | 11 | 9.3 | 9.3 |
| G | in | 23.3 | 23.3 | 24 | 27.5 | 27.5 | 30.7 | 30.7 |
| H | in | 12.6 | 12.6 | 13.4 | 14 | 14.2 | 17.1 | 17.1 |

Diesel Pile Hammers

Technical Data

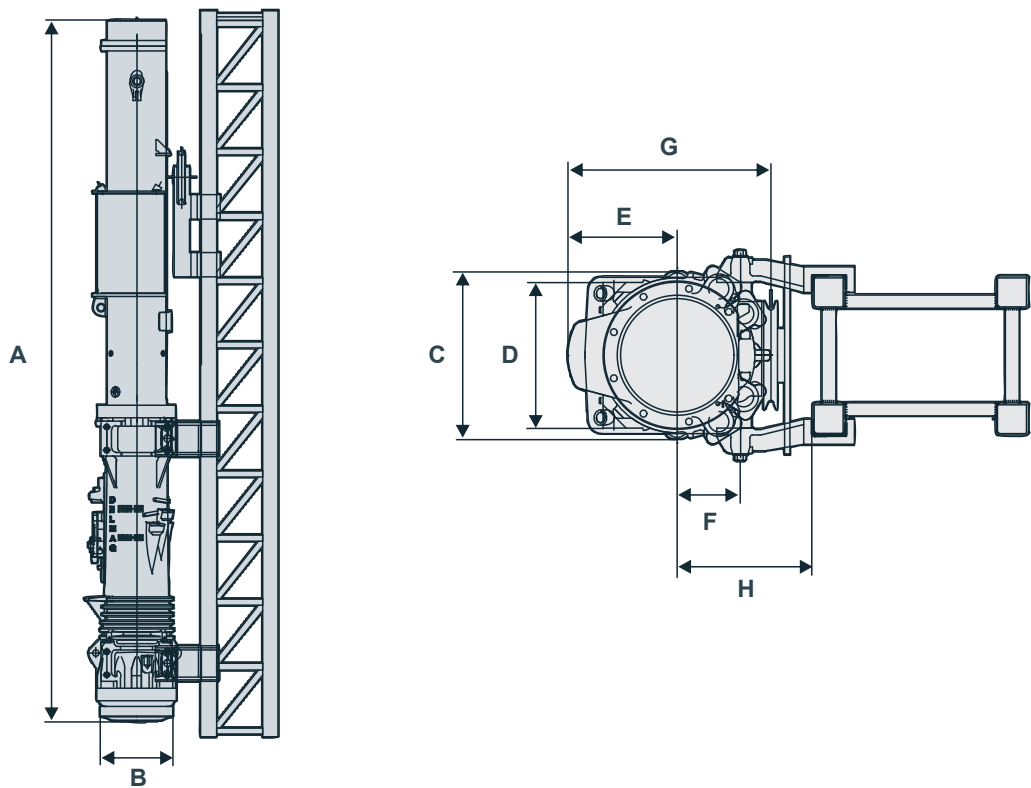
| | | D36-32 | D46-32 | D62-22 | D80-23 |
|--|---------|---------------|----------------|----------------|-----------------|
| Impact weight (piston) | kg | 3600 | 4600 | 6200 | 8000 |
| | lbs | 7,940 | 10,140 | 13,640 | 17,600 |
| Energy per blow max. - min. | kNm | 123-56 | 166-71 | 224-107 | 288-171 |
| | ft-lbs | 90,720-41,300 | 122,435-52,370 | 165,215-78,920 | 212,420-126,125 |
| Number of blows | min-1 | 36-53 | 35-53 | 35-50 | 35-45 |
| Suitable for driving piles (depending on soil and pile) | t | 2,5-12 | 3-16 | 4-30 | 6-60 |
| | US tons | 2.2-13.2 | 3.3-17.6 | 4.4-33.1 | 6.6-66.1 |
| Consumption | | | | | |
| Diesel oil | l/h | 11,5 | 16 | 20 | 25 |
| | gal/h | 2.53 | 3.52 | 4.4 | 5.5 |
| Lubricant | l/h | 1,5 | 1,5 | 2 | 2,6 |
| | gal/h | 0.33 | 0.33 | 0.44 | 0.57 |
| Tank capacity | | | | | |
| Diesel oil tank | l | 89 | 89 | 98 | 155 |
| | gal | 23.5 | 23.5 | 25.9 | 40.9 |
| Lube tank | l | 17 | 17 | 31,5 | 32 |
| | gal | 4.5 | 4.5 | 8.3 | 8.5 |
| Max. rope diameter for deflector sheave of tripping device (* reeved twice) | mm | 38 | 38 | 38 | 30* |
| | in | 1.5 | 1.5 | 1.5 | 1.2* |
| Max. inclined pile driving without / with extension | | 1:5 / 1:1 | 1:5 / 1:1 | 1:2 / 1:1 | 1:5 / 1:2 |
| Weight | | | | | |
| Diesel pile hammer | kg | 8200 | 9300 | 12250 | 16905 |
| | lbs | 18,060 | 20,485 | 26,950 | 37,190 |
| Tripping device | kg | 450 | 450 | 450 | 750 |
| | lbs | 992 | 992 | 992 | 1,650 |

Technical Data

| | | D100-13 | D150-42 | D200-42 |
|--|---------|-----------------|-----------------|-----------------|
| Impact weight (piston) | kg | 10000 | 15000 | 20000 |
| | lbs | 22,000 | 33,000 | 44,000 |
| Energy per blow max. - min. | kNm | 360-214 | 512-329 | 682-436 |
| | ft-lbs | 265,520-157,840 | 377,630-242,660 | 503,036-321,580 |
| Number of blows | min-1 | 35-45 | 36-45 | 36-45 |
| Suitable for driving piles (depending on soil and pile) | t | 7-100 | 12-160 | 14-250 |
| | US tons | 7.7-110.2 | 13.2-176.4 | 15.4-275.6 |
| Consumption | | | | |
| Diesel oil | l/h | 30 | 50 | 60 |
| | gal/h | 6.6 | 11 | 13.2 |
| Lubricant | l/h | 2,6 | 4,8 | 5,8 |
| | gal/h | 0.57 | 1 | 1.3 |
| Tank capacity | | | | |
| Diesel oil tank | l | 155 | 310 | 430 |
| | gal | 40.9 | 81.9 | 113.6 |
| Lube tank | l | 32 | 45 | 80 |
| | gal | 8.5 | 11.9 | 21.1 |
| Max. rope diameter for deflector sheave of tripping device (* reeved twice) | mm | 30* | 36* | 36* |
| | in | 1.2* | 1.4* | 1.4* |
| Max. inclined pile driving without / with extension | | 1:5 / 1:2 | 1:5 / 1:2 | 1:5 / 1:3 |
| Weight | | | | |
| Diesel pile hammer | kg | 20720 | 28450 | 51800 |
| | lbs | 45,585 | 62,590 | 113,960 |
| Tripping device | kg | 750 | 1850 | 1850 |
| | lbs | 1,650 | 4,070 | 4,070 |

Dimensions

| | | D36-32 | D46-32 | D62-22 | D80-23 | D100-13 | D150-42 | D200-42 |
|---|----|--------|--------|--------|--------|---------|---------|---------|
| A | mm | 5470 | 5470 | 5910 | 7200 | 7358 | 7490 | 8175 |
| B | mm | 660 | 660 | 710 | 820 | 820 | 990 | 1250 |
| C | mm | 800 | 800 | 800 | 890 | 890 | 1280 | 1425 |
| D | mm | 640 | 640 | 560 | 800 | 800 | 1110 | 1425 |
| E | mm | 445 | 445 | 490 | 550 | 550 | 720 | 730 |
| F | mm | 275 | 275 | 380 | 350 | 350 | 375 | 580 |
| G | mm | 950 | 950 | 970 | 1110 | 1110 | 1450 | 1890 |
| H | mm | 500 | 500 | 500 | 660 | 660 | 900 | 1050 |



Dimensions

| | | D36-32 | D46-32 | D62-22 | D80-23 | D100-13 | D150-42 | D200-42 |
|---|----|--------|--------|--------|--------|---------|---------|---------|
| A | in | 215.4 | 215.4 | 232.7 | 283.7 | 289.9 | 294.9 | 322.1 |
| B | in | 26 | 26 | 28 | 32.3 | 32.3 | 39 | 49.3 |
| C | in | 31.4 | 31.4 | 31.5 | 35.1 | 35.1 | 50.4 | 56.2 |
| D | in | 25.2 | 25.2 | 22 | 31.5 | 31.5 | 43.7 | 56.2 |
| E | in | 17.5 | 17.5 | 19.3 | 21.7 | 21.7 | 28.4 | 28.8 |
| F | in | 10.8 | 10.8 | 15 | 13.8 | 13.8 | 14.8 | 22.9 |
| G | in | 37.4 | 37.4 | 38.2 | 43.7 | 43.7 | 57.1 | 74.5 |
| H | in | 19.7 | 19.7 | 19.7 | 26 | 26 | 35.5 | 41.4 |

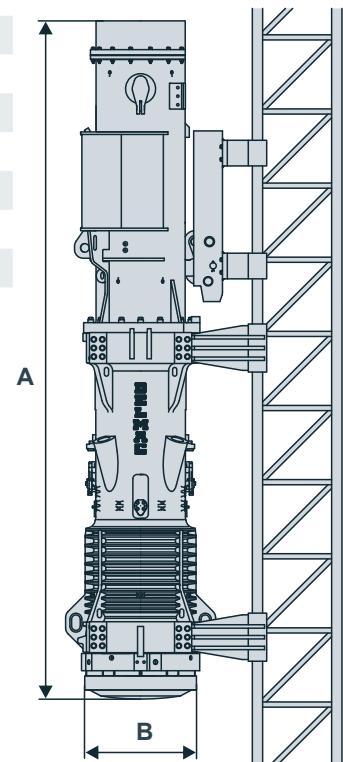
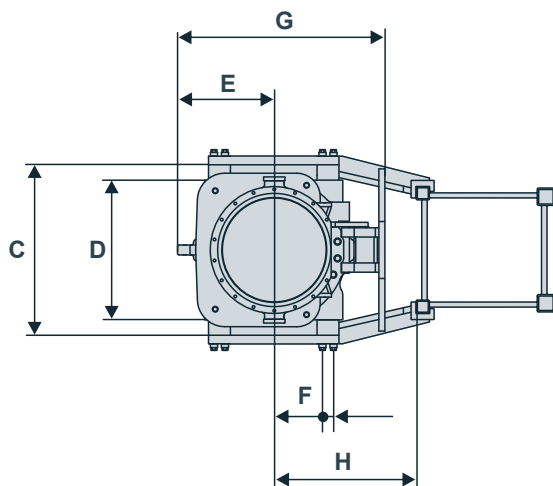
Diesel Pile Hammers

Technical Data

| | | D260-32 | D300-32 | D400-32 |
|--|---------|-------------------|-------------------|-------------------|
| Impact weight (piston) | kg | 26000 | 30000 | 40000 |
| | lbs | 57,320 | 66,140 | 88,190 |
| Energy per blow max. - min. | kNm | 865-556 | 1002-641 | 1335-855 |
| | ft-lbs | 638,000 - 410,100 | 739,000 - 472,800 | 984,600 - 630,600 |
| Number of blows | min-1 | 36-45 | 36-45 | 36-45 |
| Suitable for driving piles (depending on soil and pile) | t | 26-280 | 28-320 | 45-420 |
| | US tons | 28.7 - 308.6 | 30.9 - 352.7 | 49.6 - 463.0 |
| Consumption | | | | |
| Diesel oil | l/h | 72 | 85 | 112 |
| | gal/h | 19.0 | 22.5 | 29.6 |
| Lubricant | l/h | 6 | 6 | 6 |
| | gal/h | 1.6 | 1.6 | 1.6 |
| Tank capacity | | | | |
| Diesel oil tank | l | 550 | 550 | 800 |
| | gal | 145.3 | 145.3 | 211.3 |
| Lube tank | l | 80 | 80 | 90 |
| | gal | 21.1 | 21.1 | 23.8 |
| Max. rope diameter for deflector sheave of tripping device (* reeved twice) | mm | 40* | 40* | 40* |
| | in | 1.6* | 1.6* | 1.6* |
| Max. inclined pile driving without / with extension | | 1:5 / - | 1:5 / - | 1:5 / - |
| Weight | | | | |
| Diesel pile hammer | kg | 53500 | 59500 | 79500 |
| | lbs | 117,950 | 131,180 | 175,270 |
| Tripping device | kg | 2450 | 2450 | 2450 |
| | lbs | 5,400 | 5,400 | 5,400 |

Dimensions

| | | D260-32 | D300-32 | D400-32 | | | D260-32 | D300-32 | D400-32 |
|----------|----|---------|---------|-------------|----|--|-----------|-----------|----------------|
| A | mm | 7890 | 7965 | 8205 | in | | 310.6 | 313.6 | 323.0 |
| B | mm | 1300 | 1320 | 1495 | in | | 51.2 | 52.0 | 58.9 |
| C | mm | 1400 | 1445 | 1785 | in | | 55.1 | 56.9 | 70.3 |
| D | mm | 1275 | 1275 | 1560 | in | | 50.2 | 50.2 | 61.4 |
| E | mm | 875 | 895 | 1055 | in | | 34.4 | 35.2 | 41.5 |
| F | mm | 445/545 | 445/545 | 505/605/705 | in | | 17.5/21.5 | 17.5/21.5 | 19.9/23.8/27.8 |
| G | mm | 1880 | 1945 | 2240 | in | | 74.0 | 76.6 | 88.2 |
| H | mm | 1300 | 1400 | 1500 | in | | 51.2 | 55.1 | 59.1 |



Technical Data

Diesel pile hammer with hydraulic starting device

| | | D12-52 | D19-52 | D25-52 | D30-52 |
|--|--------|---------------|---------------|---------------|---------------|
| Impact weight (piston) | kg | 1280 | 1820 | 2500 | 3000 |
| | lbs | 2,820 | 4,010 | 5,510 | 6,610 |
| Energy per blow max. - min. | kNm | 46-20 | 66-29 | 90-40 | 103-48 |
| | ft-lbs | 33,930-14,750 | 48,680-21,390 | 66,380-29,500 | 75,970-35,400 |
| Number of blows | min-1 | 35-52 | 35-52 | 35-52 | 36-52 |
| Suitable for driving piles (depending on soil and pile) | kg | 800-5000 | 1100-6000 | 1600-7500 | 2000-9000 |
| | lbs | 1,760-11,000 | 2,420-13,200 | 3,530-16,535 | 4,410-19,840 |

Consumption

| | | | | | |
|------------|-------|------|------|------|------|
| Diesel oil | l/h | 4,5 | 7,5 | 7,5 | 10 |
| | gal/h | 1 | 1.65 | 1.65 | 2.2 |
| Lubricant | l/h | 0,5 | 0,5 | 0,6 | 1 |
| | gal/h | 0.11 | 0.11 | 0.13 | 0.22 |

Tank capacity

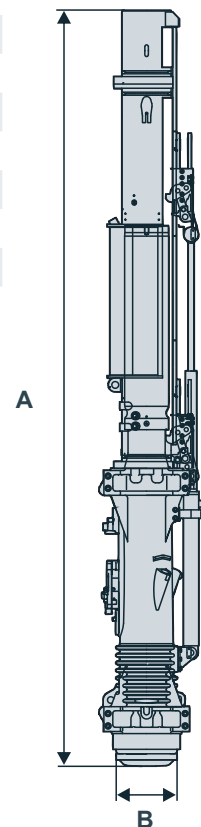
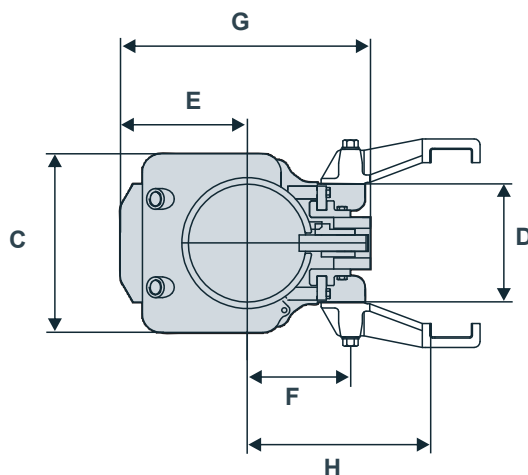
| | | | | | |
|--|-----|-----------|-----------|-----------|-----------|
| Diesel oil tank | l | 25 | 32 | 67 | 67 |
| | gal | 6.6 | 8.45 | 17.7 | 17.7 |
| Lube tank | l | 6,5 | 9 | 19 | 19 |
| | gal | 1.7 | 2.4 | 5 | 5 |
| Max. rope diameter for deflector sheave of tripping device | mm | 20 | 20 | 22 | 22 |
| | in | 0.78 | 0.78 | 0.87 | 0.87 |
| Max. inclined pile driving without / with extension | | 1:5 / 1:1 | 1:5 / 1:1 | 1:5 / 1:1 | 1:5 / 1:1 |

Weight

| | | | | | |
|---|-----|-------|-------|--------|--------|
| Diesel pile hammer with hydraulic starting device, without guidings | kg | 3500 | 4100 | 6380 | 6880 |
| | lbs | 7,720 | 9,040 | 14,070 | 15,170 |

Dimensions

| | | D12-52 | D19-52 | D25-52 | D30-52 | | D12-52 | D19-52 | D25-52 | D30-52 |
|---|----|--------|--------|--------|--------|----|--------|--------|--------|--------|
| A | mm | 5500 | 5500 | 5650 | 5650 | in | 216.5 | 216.5 | 222.4 | 222.4 |
| B | mm | 440 | 440 | 560 | 560 | in | 17.3 | 17.3 | 22 | 22 |
| C | mm | 485 | 485 | 640 | 640 | in | 19.1 | 19.1 | 25.2 | 25.2 |
| D | mm | 320 | 320 | 540 | 540 | in | 12.6 | 12.6 | 21.3 | 21.3 |
| E | mm | 345 | 345 | 405 | 405 | in | 13.6 | 13.6 | 15.9 | 15.9 |
| F | mm | 280 | 280 | 235 | 235 | in | 11 | 11 | 9.3 | 9.3 |
| G | mm | 730 | 680 | 880 | 880 | in | 28.7 | 26.8 | 34.6 | 34.6 |
| H | mm | 500 | 500 | 500 | 500 | in | 19.7 | 19.7 | 19.7 | 19.7 |



Marken der
Brands of **ABI Gruppe**



For further informations please contact your DELMAG sales assistant. Or you visit us on the Internet at www.delmag.de. Design subject to modifications. The details in this leaflet have to be regarded as approximate. The illustrations also can contain special outfits which are not part of the standard scope of supply. Not represented equipment variants can lead to modifications of the technical data. The reproduction and utilization of this document, even in form of excerpts, without express authorization is prohibited. Offenders will be held liable for the payment of damages.

DELMAG GmbH & Co. KG
Max-Planck-Str. 3
73730 Esslingen
Germany

Telefon: +49 (0) 711 3100-0
Telefax: +49 (0) 711 3100-119
eMail: info@delmag.de
Web: www.delmag.de

